



EXAMINATIONS COUNCIL OF SWAZILAND
Swaziland General Certificate of Secondary Education

CANDIDATE
NAME

--

CENTRE
NUMBER

--	--	--	--	--

CANDIDATE
NUMBER

--	--	--	--

FASHION AND FABRICS

6904/01

Paper 1 Theory

October/November 2018

2 hours

Candidates answer on the Question Paper.

Additional Materials: Coloured pencils (not yellow)
 Ruler, eraser
 Small pieces of fabric
 Needle and thread

READ THESE INSTRUCTIONS FIRST

Write your Centre number, candidate number and name on all the work you hand in.
Write in dark blue or black pen.

You may use a soft pencil and eraser for diagrams or sketches.
Do **not** use staples, paper clips, glue or correction fluid.

Section A

Answer **all** parts in the spaces provided on the question paper.

Section B

Answer any **two** questions in the spaces provided on the question paper.

Section C

Answer **one** question only in the spaces provided.

Do **not** spend more than **30** minutes on each question.
Enter the number of the questions in **Section B** and **C** in
the grid below.

The number of marks is given in brackets [] at the end of
each question or part question.

For Examiner's Use	
Question Number	Marks
Section A	/
Section B	
Section C	
Total	

This document consists of **15** printed pages and **1** blank page.

SECTION A

Answer **all** questions from this section in the spaces provided.

1 (a) (i) Label the style features shown in **Fig. 1**, using at least **two** words in each case.

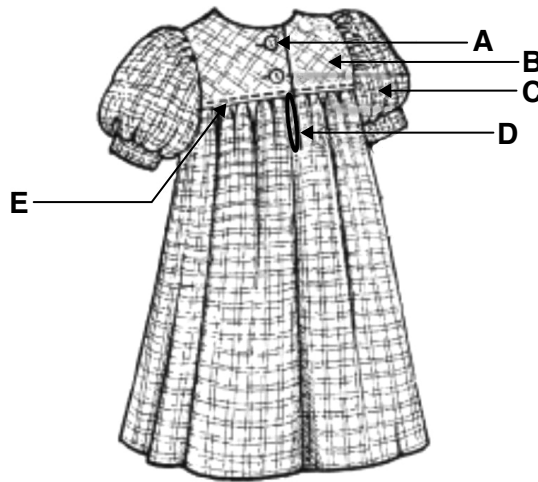


Fig. 1

A

B

C

D

E

[5]

(ii) Explain why the style of dress in **Fig. 1** is suitable for a child.

.....

.....

..... [2]

(iii) The dress above could be made using a lightweight denim fabric. Give **three** reasons why this fabric is suitable for the dress.

(i)

(ii)

(iii) [3]

(b) (i) Study the diagram in **Fig. 2** and complete the sentences below.

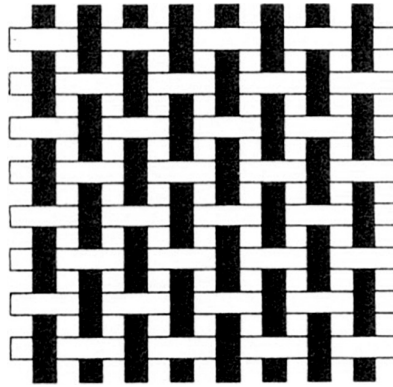


Fig. 2

The diagram in **Fig. 2** shows a weave. The threads pass alternatively under and over the to produce the weave.

[3]

(ii) Name **two** other types of weaves.

.....
..... [2]

(c) Explain what is meant by a **one-way** design.

.....
..... [2]

(d) Give **one** use for each of the following stitches:

(i) Diagonal tacking..... [1]

(ii) Herringbone [1]

(iii) Fishbone [1]

(e) Describe the following types of needles used in hand sewing and state a specific use for each one.

(i) Sharps.....

.....

Use..... [2]

(ii) Crewel.....

.....

Use..... [2]

(f) (i) State **two** methods of neatening a plain open seam on a lightweight polyester fabric.

.....

..... [2]

(ii) Draw the following care symbols found on garments.

(a) Do not bleach



[2]

(b) Dry flat



[2]

(g) Explain how to make sure that facings stay in position during wear.

.....

..... [2]

(h) State which fabric the following finish is suitable for and explain why each is used:

(i) Weighting/Weighing.

Name of suitable fabric

Why the finish is used

..... [2]

(ii) Heat setting/Permanent press.

Name of fabric

Why the finish is used

..... [2]

(i) How can the following machine faults be corrected?

(i) Machine feed dog/teeth locks and refuses to move

.....

..... [1]

(ii) Machine makes clicking noises as soon as you start sewing

.....

..... [1]

(j) Describe **two** ways to identify the right side of a fabric.

.....

.....

.....

..... [2]

Total Marks [40]

SECTION B

Answer **two** questions in this section in the spaces provided.

2 (a) State **two** types of knitted fabrics.

.....
..... [2]

(b) Give **three** advantages of using knitted fabrics for garment making.

(i)
(ii)
(iii) [3]

(c) Explain why the following techniques are used in garment making.

(i) Stay stitching
.....
..... [1]

(ii) Layering/grading
.....
..... [1]

(iii) Pressing
.....
..... [1]

(d) (i) Describe, how to select the correct pattern size for the individual, when making a garment from a commercial pattern.

.....
.....
.....
.....
.....
..... [3]

(ii) Give **three** pieces of information which are found on the instruction sheet of a commercial pattern.

.....
.....
..... [3]

(e) Explain, with the aid of a labelled diagram, how to prepare a shaped facing for a round neckline of a shirt made from poplin.

[6]

Total Marks [20]

3 (a) Identify **two** classes of dyes.

.....
..... [2]

(b) Explain the difference between clipping and notching.

.....
..... [2]

(c) (i) What is the name of the fasteners shown below?

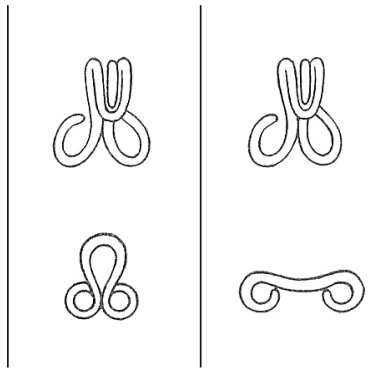


Fig. 3

..... [1]

(ii) Give **two** points to consider when choosing fasteners.

.....
.....
.....
..... [2]

(d) Study the shirt below.



Fig. 4

(i) Name the type of sleeve on the shirt.

..... [1]

(ii) Sketch the pattern piece for the front of the shirt.

[2]

(iii) On the sketch drawn above, label **four** pattern markings that can be found on the pattern piece. [4]

10

For
Examiner's
Use

- (e) Explain, using notes and labelled diagrams, how to sew a crotch seam on a pair of pants/trousers made from a medium weight lawn fabric.

[6]

Total Marks [20]

4 (a) List **two** points to consider when buying a new tape measure.

.....
.....
..... [2]

(b) State the function of each of the following machine parts:

(i) Stop motion screw

.....
.....

(ii) Throat plate

.....
.....

(iii) Feed dog

.....
..... [3]

(c) Study the diagrams below and answer the questions that follow.

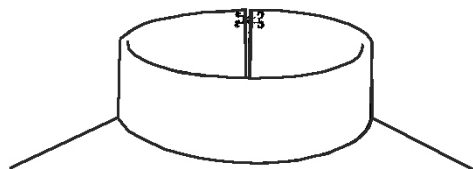


Fig. 5

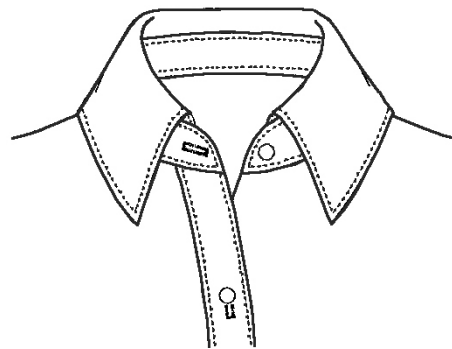


Fig. 6

(i) Name the types of collars

Fig. 5.....

Fig. 6..... [2]

(ii) Which of the collars shown above would be most suitable for a person with a short neck and why?

Suitable collar..... [1]

Reason..... [1]

(d) (i) Explain what is meant by a “good fit” on a garment.

.....
..... [1]

(ii) Name **two** traditional pieces of clothing worn by teenage boys.

.....
..... [2]

(iii) Suggest **two** traditional accessories to be worn with the outfit in Section **(d)(ii)** above.

.....
..... [2]

(e) With the aid of diagrams, explain how to prepare and attach a cuff on a sleeve.

[6]

Total Marks [20]

SECTION C

Answer **one** question in this section.

Write your answer on the following pages.

- 5** Discuss the points to consider when planning a wardrobe for a teenager. [20]

OR

- 6** Discuss the points to consider when choosing a sewing machine and give advice on the use and care of the sewing machine.

[20]

Total Marks [20]

A series of horizontal dotted lines for writing.

A series of horizontal dotted lines for writing.

Dotted lines for writing.

Permission to reproduce items where third-party owned material protected by copyright is included has been sought and cleared where possible. Every reasonable effort has been made by the publisher (ECOS) to trace copyright holders, but if any items requiring clearance have unwittingly been included, the publisher will be pleased to make amends at the earliest possible opportunity.